

SHIELDED VALVE/BALL

VALVOLA /SFERA PROTETTA
SHIELDED VALVE/BALL
GESCHIRMTES VENTIL/KUGEL
CLAPET/BILLE BLIDÉE

Caratteristiche tecniche I

- Norma: ISO 7241 A
- Occlusione: valvola o sfera protetta
- Aggancio: sfere radiali
- Materiale: acciaio
- Finitura: Zn-Fe (Cr III)
- Filettature: BSP-NPT-SAE
- Guarnizioni standard: NBR
- Temperatura d'esercizio: -25°C+100°C
- Guarnizioni opzionali: FKM, EPDM o altro.
- Pressioni di esercizio: 200-250 bar
- Connessione in pressione residua: non consentita

Technical data E

- Standard: ISO 7241 A
- Occlusion: shielded valve or ball
- Locking: radial balls
- Material: steel
- Finishing: Zn-Fe (Cr III)
- Threads: BSP-NPT-SAE
- Standard seals: NBR
- Working temperature: -25°C+100°C
- Optional seals: FKM, EPDM or more.
- Working pressure: 200-250 bar
- Connection under residual pressure: not allowed

Technische Merkmale D

- Norm: ISO 7241 A
- Verschluss: Geschirmntes Ventil oder Kugel
- Verriegelung: Stahlkugeln
- Werkstoff: Stahl
- Ausführung: Zn-Fe (Cr III)
- Gewinde: BSP-NPT-SAE
- Standard-Dichtungen: NBR
- Betriebstemperatur: -25°C+100°C
- Dichtungen nach Wahl: FKM, EPDM, usw.
- Betriebsdruck: 200-250 bar
- Kuppeln unter Restdruck: nicht möglich

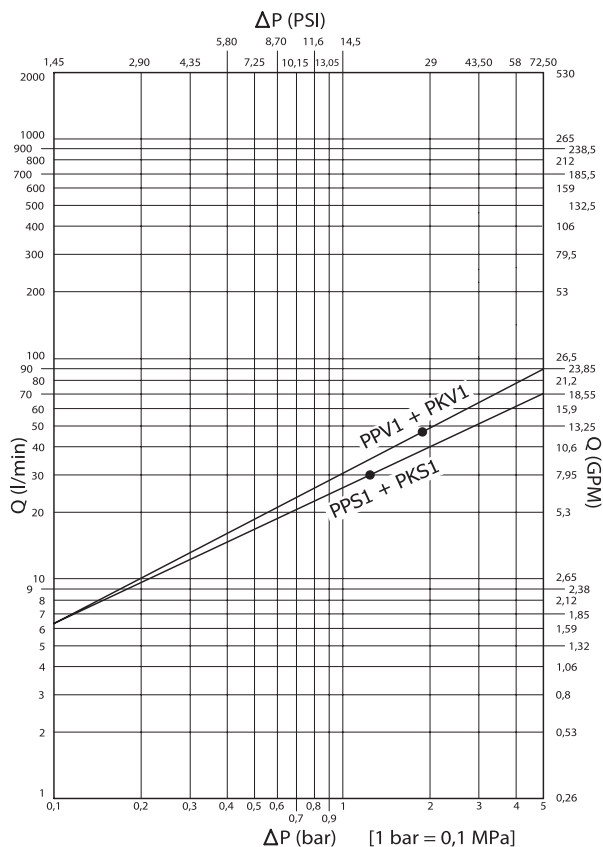
Caracteristiques techniques F

- Norme: ISO 7241 A
- Obturation: clapet ou bille blindée
- Accrochage: billes radiales
- Matériel: acier
- Traitement: Zn-Fe (Cr III)
- Taraudage: BSP-NPT-SAE
- Joints standard: NBR
- Température de service: -25°C+100°C
- Joints facultatifs: FKM, EPDM, ect.
- Pression de service: 200-250 bar
- Connexion sous pression résiduelle: pas possible

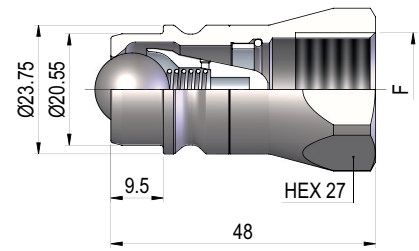


	Nominal size				Max working pressure MPa	Rated flow l/min	Max flow rate l/min	Min burst pressure			Fluid spillage cc
	DNP	BG	ISO	mm				Male	Female	Coupled	
PKS1	13	3	12.5	8.9	20	30	55	80	See PPS1	130	1.90
PKV1	13	3	12.5	10.5	25	45	90	100	See PPV1	120	2.70

1 MPa = 145.04 psi • 1 l = 0.264 gal

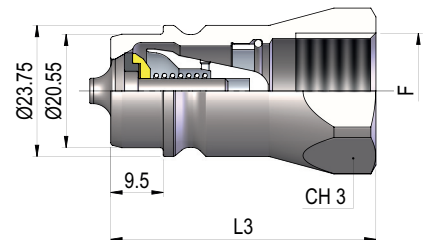


PKS1 DN13 - BG 3 - ISO 12.5

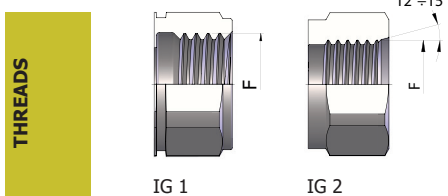


THREADS	F	STANDARD	FEMMINA - FEMALE - MUFFE - FEMELLE	MASCHIO - MALE - STECKER - MALE		
			COD. F	COD. M	Weight (g)	Packaging (pcs)
IG 1	BSP 1/2"	DIN 3852-2	See PPS1 DN13	PKS1.1313.003	103	200
	NPT 1/2"	ANSI B1.20.1	See PPS1 DN13	PKS1.1313.013	107	200

PKV1 DN13 - BG 3 - ISO 12.5



THREADS	CH3	L3	F	STANDARD	FEMMINA - FEMALE - MUFFE - FEMELLE	MASCHIO - MALE - STECKER - MALE		
					COD. F	COD. M	Weight (g)	Packaging (pcs)
IG 1	27	48	BSP 1/2"	DIN 3852-2	See PPV1 DN13	PKV1.1313.003	104	200
	27	48	NPT 1/2"	ANSI B1.20.1	See PPV1 DN13	PKV1.1313.013	106	200
	32	52	NPT 3/4"	ANSI B1.20.1	See PAV1 DN13	PKV1.1319.013	142	200
IG 2	27	48	3/4"-16 UNF 2B	SAE J 1926-1	See PPV1 DN13	PKV1.1319.033	107	200
	27	48	7/8"-14 UNF 2B	SAE J 1926-1	See PAV1 DN13	PKV1.1323.033	93	200

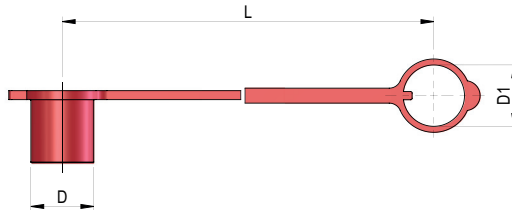


PLASTIC CAPS

NOMINAL SIZE		MALE DUST CAP						COLOR	MATERIAL
DNP	BG	ISO	COD. M	Dimensions			Weight (g)		
				D	L	D1			
13	3	12.5	SPAV.13003	29	250	26	21		PVC
13	3	12.5	SPAV.13013	29	250	26	21		PVC
13	3	12.5	SPAV.13023	29	250	26	21		PVC
13	3	12.5	SPAV.13033	29	250	26	21		PVC
13	3	12.5	SPAV.13043	29	250	26	21		PVC
13	3	12.5	SPAV.13053	29	250	26	21		PVC
13	3	12.5	SPAV.13063	29	250	26	21		PVC

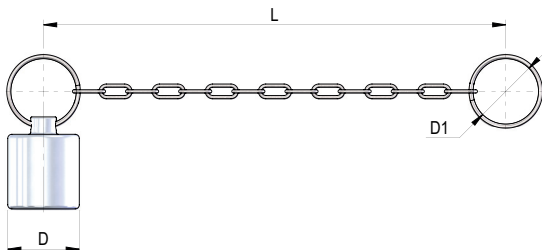


NOMINAL SIZE		MALE DUST CAP						COLOR	MATERIAL
DNP	BG	ISO	COD. M	Dimensions			Weight (g)		
				D	L	D1			
13	3	12.5	SPAV.13003 KR	29.5	195	27	19		PVC
13	3	12.5	SPAV.13013 KR	29.5	195	27	19		PVC
13	3	12.5	SPAV.13023 KR	29.5	195	27	19		PVC
13	3	12.5	SPAV.13033 KR	29.5	195	27	19		PVC
13	3	12.5	SPAV.13043 KR	29.5	195	27	19		PVC



METAL CAPS

NOMINAL SIZE		MALE DUST CAP						MATERIAL
DNP	BG	ISO	COD. M	Dimensions			Weight (g)	
				D	L	D1		
13	3	12.5	SPAV.13203	30	174	27	70	Aluminum



AUTOMATIC CAPS

NOMINAL SIZE		AUTOMATIC MALE CAP						COLOR	MATERIAL
DNP	BG	ISO	COD. M	Dimensions		Weight (g)			
				D	S				
13	3	12.5	SPPV.13303	46	33	60		Nylon	
13	3	12.5	SPPV.13333	46	33	60		Nylon	
13	3	12.5	SPPV.13343	46	33	60		Nylon	

