

## SPECIAL EXECUTIONS

ESECUZIONI SPECIALI  
SPECIAL EXECUTIONS  
SONDERAUSFÜHRUNGEN  
EXECUTIONS SPECIALES

### Caratteristiche tecniche I

- Intercambiabilità:  
(PGR) serie 5000 Gromelle (solo DN25)  
(PGV) mercato giapponese (solo DN25)  
(PSS-PSV) serie 4000 Parker (solo DN20)  
(PNZ) serie PBR (solo DN25)
- Occlusione: valvola o sfera
- Aggancio: sfere radiali
- Materiale: acciaio o acciaio inossidabile (PGRX)
- Finitura: Zn-Fe (Cr III)
- Filettature: BSP o NPT
- Guarnizioni standard: NBR o FKM (PGRX)
- Temperatura d'esercizio:  
-25 °C +100 °C / -25 °C +200 °C (PGRX)
- Guarnizioni opzionali: FKM, EPDM o altro
- Pressioni di esercizio: 200-300 bar
- Connessione in pressione residua:  
non consentita

### Technical data E

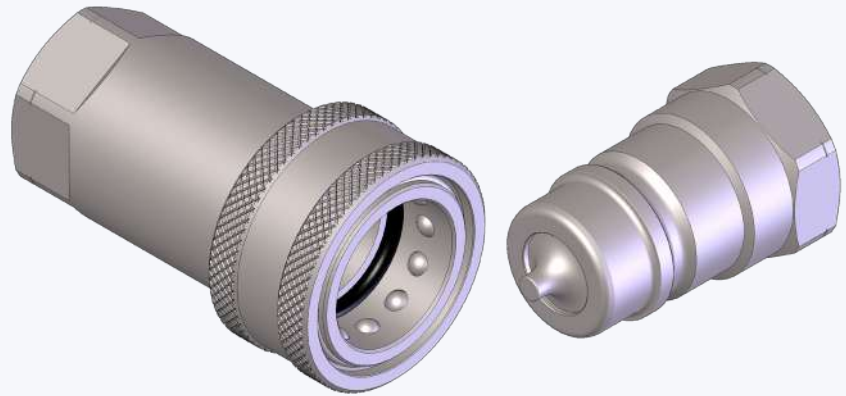
- Interchange:  
(PGR) Gromelle 5000 series (DN25 only)  
(PGV) Japanese market (DN25 only)  
(PSS-PSV) Parker 4000 series (DN20 only)  
(PNZ) PBR series (DN25 only)
- Occlusion: poppet or ball
- Locking: radial balls
- Material: steel or stainless steel (PGRX)
- Finishing: Zn-Fe (Cr III)
- Threads: BSP or NPT
- Standard seals: NBR or FKM (PGRX)
- Working temperature:  
-25 °C +100°C / -25 °C +200 °C (PGRX)
- Optional seals: FKM, EPDM or more
- Working pressure: 200-300 bar
- Connection under residual pressure:  
not allowed

### Technische Merkmale D

- Austauschbarkeit:  
(PGR) Gromelle 5000 Serie (nur DN25)  
(PGV) japanischer Markt (nur DN25)  
(PSS-PSV) Parker 4000 Serie (nur DN20)  
(PNZ) PBR Serie (nur DN25)
- Verschluss: ventil oder kugel
- Kupplung: Radial Kugeln
- Werkstoff: Stahl oder Edelstahl (PGRX)
- Ausführung: Zn-Fe (Cr III)
- Gewinde: BSP oder NPT
- Standard-Dichtungen: NBR oder FKM (PGRX)
- Betriebstemperatur:  
-25 °C +100 °C / -25 °C +200 °C (PGRX)
- Dichtungen nach Wahl: FKM, EPDM, usw.
- Betriebsdruck: 200-300 bar
- Kuppeln unter Restdruck: nicht möglich

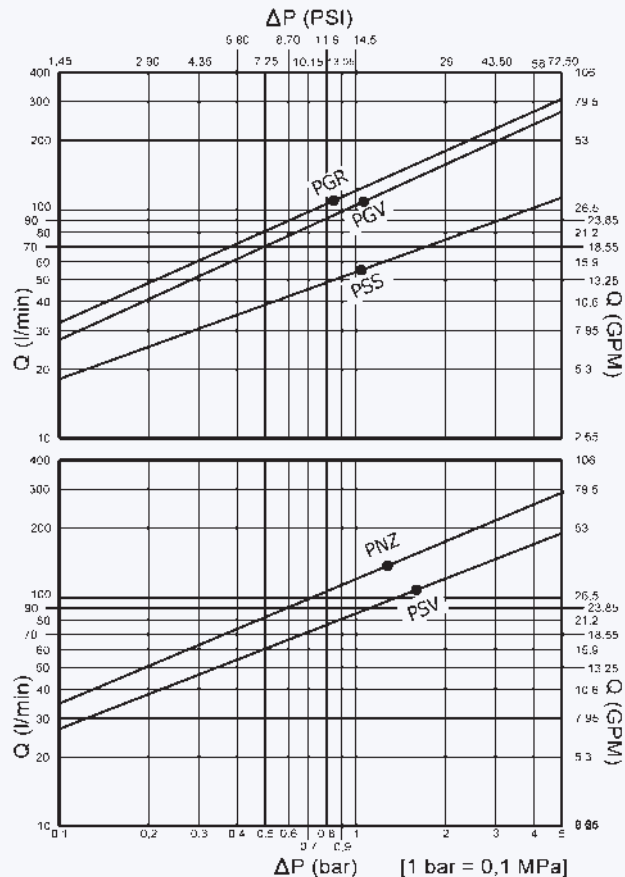
### Caracteristiques techniques F

- Intercambiabilité:  
(PGR) série 5000 Gromelle (seulement DN25)  
(PGV) marché japonais (seulement DN25)  
(PSS-PSV) série 4000 Parker (seulement DN20)  
(PNZ) série PBR (seulement DN25)
- Obturation: clapet ou bille
- Accrochage: billes radiales
- Matériel: acier ou acier inoxydable (PGRX)
- Traitement: Zn-Fe (Cr III)
- Taraudage: BSP ou NPT
- Joints standard: NBR ou FKM (PGRX)
- Température de service:  
-25 °C +100 °C / -25 °C +200 °C (PGRX)
- Joints facultatifs: FKM, EPDM, ect.
- Pression de service: 200-300 bar
- Connexion sous pression résiduelle:  
pas possible

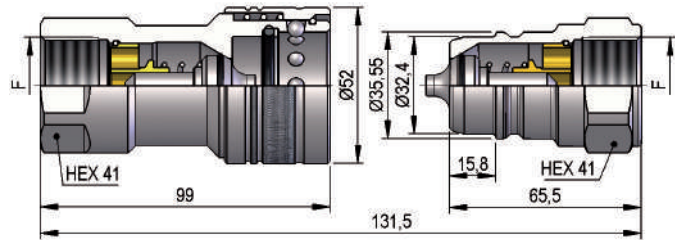


Nominal size	Max working pressure	Rated flow	Max flow rate	Min burst pressure			Fluid spillage
				Male	Female	Coupled	
DNP BG ISO mm	MPa	l/min	l/min	MPa	MPa	MPa	cc
<b>PGR1</b>	25 5 25 16.6	27	104 210	120	120	110	13
<b>PGRX</b>	25 5 25 16.6	20	104 210	80	100	75	13
<b>PGV1</b>	25 5 25 17.3	25	113 225	120	100	100	15
<b>PSS1</b>	20 4 19 12	22	58 100	93	88	110	4.6
<b>PSV1</b>	20 4 19 12.3	25	106 220	100	140	130	11
<b>PNZ1</b>	25 5 25 17.3	30	200 400	140	130	130	16

1 MPa = 145.04 psi • 1 l = 0.264 gal

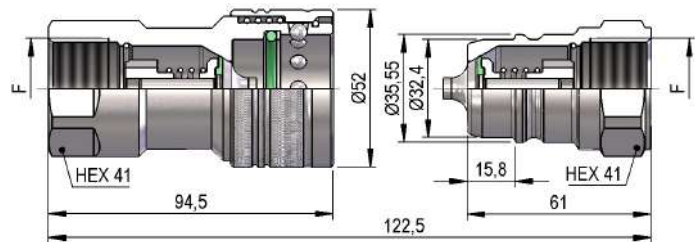


## PGR1 DN25 - BG 5 - ISO 25



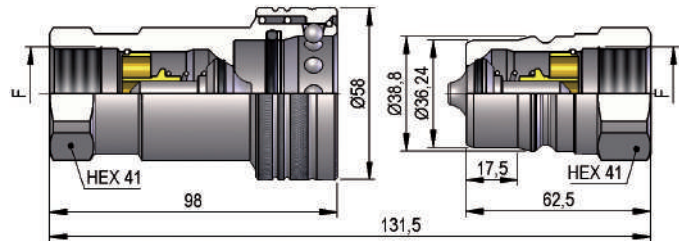
F	STANDARD	FEMMINA - FEMALE - MUFFE - FEMELLE			MASCIO - MALE - STECKER - MALE		
		COD. F	Weight (g)	Packaging (pcs.)	COD. M	Weight (g)	Packaging (pcs.)
BSP 1"	DIN 3852-2-X	PGR1.2525.002	712	20	PGR1.2525.003	296	30

## PGRX DN25 - BG 5 - ISO 25



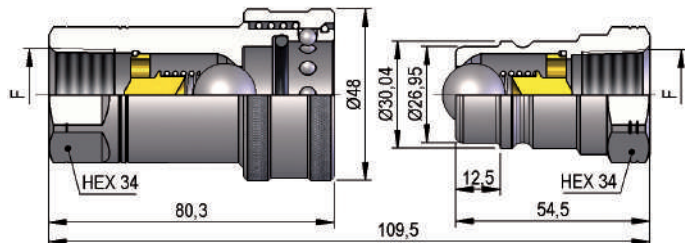
F	STANDARD	FEMMINA - FEMALE - MUFFE - FEMELLE			MASCIO - MALE - STECKER - MALE		
		COD. F	Weight (g)	Packaging (pcs.)	COD. M	Weight (g)	Packaging (pcs.)
BSP 1"	DIN 3852-2-X	PGRX.2525.002	672	20	PGRX.2525.003	255	30

## PGV1 DN25 - BG 5 - ISO 25



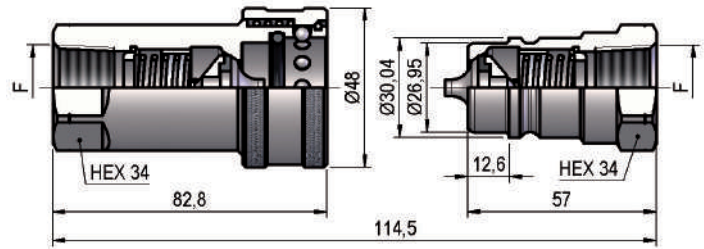
F	STANDARD	FEMMINA - FEMALE - MUFFE - FEMELLE			MASCIO - MALE - STECKER - MALE		
		COD. F	Weight (g)	Packaging (pcs.)	COD. M	Weight (g)	Packaging (pcs.)
BSP 1"	DIN 3852-2-X	PGV1.2525.002	745	18	PGV1.2525.003	326	30

## PSS1 DN20 - BG 4 - ISO 19



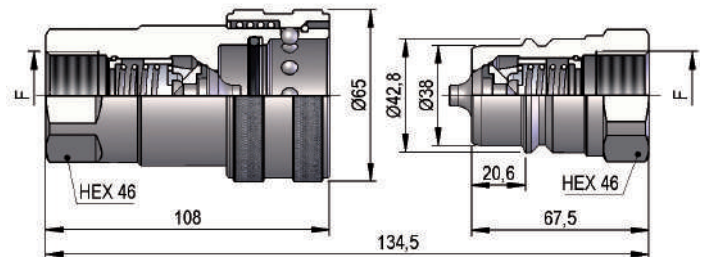
F	STANDARD	FEMMINA - FEMALE - MUFFE - FEMELLE			MASCIO - MALE - STECKER - MALE		
		COD. F	Weight (g)	Packaging (pcs.)	COD. M	Weight (g)	Packaging (pcs.)
NPT 3/4"	ANSI B1.20.3	PSS1.2019.012	506	28	PSS1.2019.013	180	45

## PSV1 DN20 - BG 4 - ISO 19



F	STANDARD	FEMMINA - FEMALE - MUFFE - FEMELLE			MASCHIO - MALE - STECKER - MALE		
		COD. F	Weight (g)	Packaging (pcs.)	COD. M	Weight (g)	Packaging (pcs.)
NPT 3/4"	ANSI B1.20.3	PSV1.2019.012	502	28	PSV1.2019.013	171	45

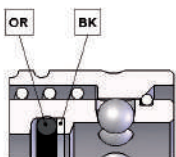
## PNZ1 DN25 - BG 5 - ISO 25



F	STANDARD	FEMMINA - FEMALE - MUFFE - FEMELLE			MASCHIO - MALE - STECKER - MALE		
		COD. F	Weight (g)	Packaging (pcs.)	COD. M	Weight (g)	Packaging (pcs.)
BSP 1"	DIN 3852-2-X	PNZ1.2525.002	1270	12	PNZ1.2525.003	459	24

## ACCESSORI / ACCESSORIES / ZUBEHÖR / ACCESSOIRES

### SPARE PARTS



	NOMINAL SIZE			FEMALE GASKET	
	DNP	BG	ISO	OR (NBR*-FKM)	BK (PTFE)
<b>PGR1</b>	25	5	25	PGR.025.120	PGR.025.130
<b>PGRX</b>	25	5	25	PGR.025.120 V	PGR.025.130
<b>PGV1</b>	25	5	25	PGV.025.120	PGV.025.130
<b>PSS1</b>	20	4	19	PSS.019.120	-
<b>PSV1</b>	20	4	19	PSS.019.120	-
<b>PNZ1</b>	25	5	25	PBV.025.120	PNZ.025.130

\*AL CODICE DELLA GUARNIZIONE IN NBR AGGIUNGERE 'E' PER EPDM O 'V' PER VITON

\*TO THE NBR GASKET CODE ADD 'E' FOR EPDM OR 'V' FOR VITON

\*ZU DER ARTIKELNR. DER NBR DICHTUNG GEBEN SIE 'E' FUER EPDM ODER 'V' FUER VITON AN

\*AU CODE DU JOINT EN NBR JOINDRE 'E' POUR EPDM OU 'V' POUR VITON