

1500 BAR/116 SERIES

ALTISSIMA PRESSIONE
UHP COUPLINGS
HÖCHSTDRUCK
ULTRA HAUTE PRESSION

Caratteristiche tecniche I

- Compatibilità: Cejn 116
- Occlusione: valvola
- Aggancio: sfere radiali
- Materiale: acciaio ad alta resistenza
- Finitura: Zn-Ni
- Filettature: BSP - NPT
- Guarnizioni standard: miscela speciale
- Temperatura d'esercizio: -35 °C +130 °C
- Pressioni di esercizio: 1500 bar
- Fattore di sicurezza: 1:2.5
- Connessione in pressione residua: non consentita

Technical data E

- Compatibility: Cejn 116
- Occlusion: poppet
- Locking: radial balls
- Material: high resistance steel
- Finishing: Zn-Ni
- Threads: BSP - NPT
- Standard seals: special compound
- Working temperature: -35 °C +130 °C
- Working pressure: 1500 bar
- Safety factor: 1:2.5
- Connection under residual pressure: not allowed

Technische Merkmale D

- Kompatibilität: Cejn 116
- Verschluss: ventil
- Kupplung: Radialkugeln
- Werkstoff: hochwertiger Stahl
- Ausführung: Zn-Ni
- Gewinde: BSP - NPT
- Standard-Dichtungen: Sondermischung
- Betriebstemperatur: -35 °C +130 °C
- Betriebsdruck: 1500 bar
- Sicherheitsfaktor: 1:2.5
- Kuppeln unter Restdruck: nicht möglich

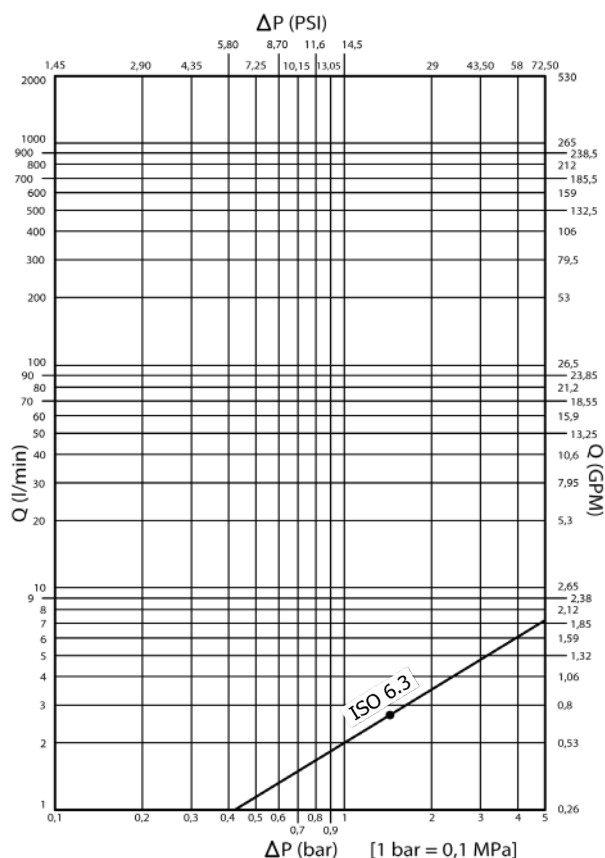
Caracteristiques techniques F

- Compatibilité: Cejn 116
- Obturation: clapet
- Accrochage: billes radiales
- Matériel: acier à haute résistance
- Traitement: Zn-Ni
- Taraudage: BSP - NPT
- Joints standard: composé spécial
- Température de service: -35 °C +130 °C
- Pression de service: 1500 bar
- Facteur de sécurité: 1:2.5
- Connexion sous pression résiduelle: pas possible

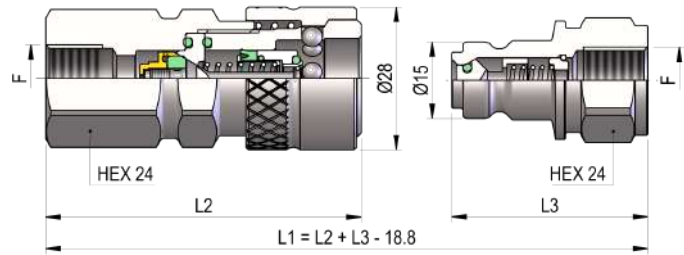


Nominal size				Max working pressure	Rated flow	Max flow rate	Min burst pressure			Fluid spillage
DNP	BG	ISO	mm				Male	Female	Coupled	
06	1	6.3	2.5	150	6	6	350	350	350	0.008

1 MPa = 145.04 psi • 1 l = 0.264 gal

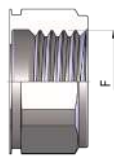


PCJ6 DN06 - BG 1 - ISO 6.3



THREADS	L2	L3	F	STANDARD	FEMMINA - FEMALE - MUFFE - FEMELLE			MASCHIO - MALE - STECKER - MALE		
					COD. F	Weight (g)	Packaging (pcs)	COD. M	Weight (g)	Packaging (pcs)
IG 1	61.3	38.1	BSP 1/4"	DIN 3852-2-X	PCJ6.0606.002	196	100	PCJ6.0606.003	71	150
	58.3	35.7	NPT 1/4"	ANSI B1.20.1	PCJ6.0606.012	186	100	PCJ6.0606.013	66	150

THREADS

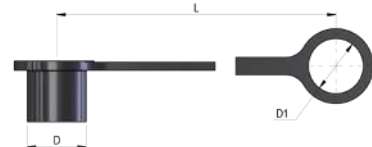
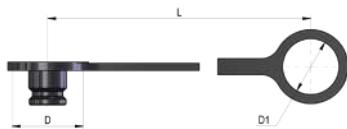


IG 1

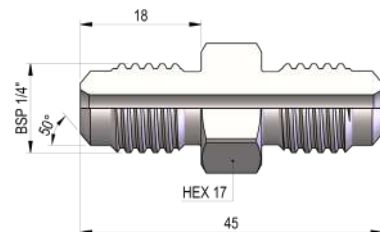
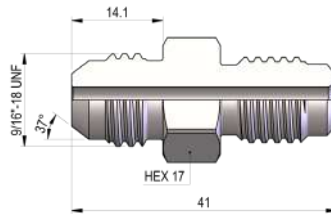
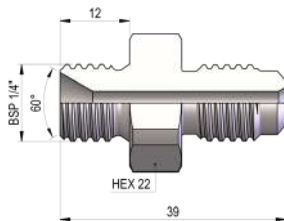
ACCESSORI / ACCESSORIES / ZUBEHÖR / ACCESSOIRES

PLASTIC CAPS

NOMINAL SIZE			FEMALE DUST PLUG				MALE DUST CAP				COLOR	MATERIAL		
DNP	BG	ISO	COD. F	Dimensions			Weight (g)	COD. M	Dimensions			Weight (g)		
				D	L	D1			D	L	D1			
06	1	6.3	SPCJ.06042	29	110	22	7	SPCJ.06043	22	110	20	9	●	PVC



ADAPTERS



NOMINAL SIZE			COD.	Weight (g)
DNP	BG	ISO	COD.	(g)
06	1	6.3	PCJ.606.371	

NOMINAL SIZE			COD.	Weight (g)
DNP	BG	ISO	COD.	(g)
06	1	6.3	PCJ.615.330	

NOMINAL SIZE			COD.	Weight (g)
DNP	BG	ISO	COD.	(g)
06	1	6.3	PCJ.606.372	